

## Digital Compression Load Cell

### FEATURES

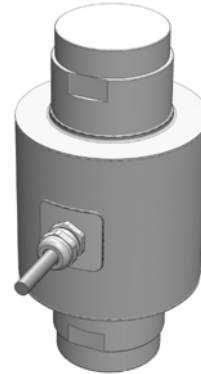
- Capacities: 20, 30, 35, 40 and 50T
- Self-aligning, stainless steel single column
- Welded seal, IP66/68—5 bar
- Certified to OIML R60 6000d (30T to 50T)
- Built-in surge protection
- RS485/RS422 2-wire, half-duplex
- Interchangeable with original Model DSC
- Built-in overload detection
- **Optional**
  - 4-wire, full-duplex with enhanced surge protection

### APPLICATIONS

- Weighbridges
- Process weighing

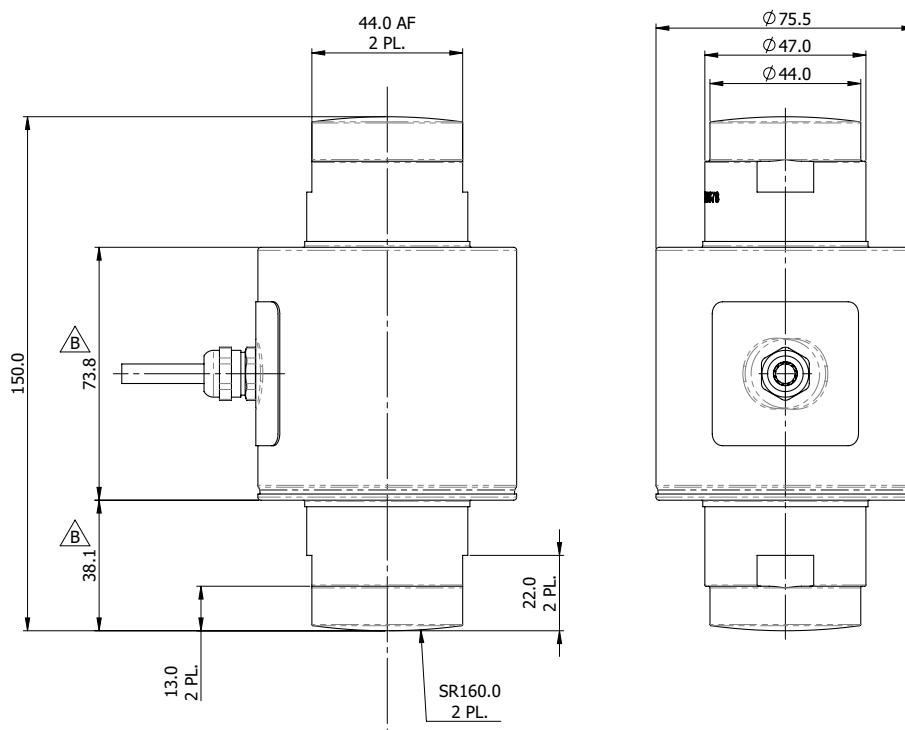
### KEY BENEFITS

- Weighing performance: up to OIML C6 with  $Y=20,000$
- High update rate: up to 200 Hz
- High resolution: 18 bit / 200,000 counts



- Protocol customization: to suit customer electronics
- PC utility: for system configuration
- Software updates: in situ—no need to remove from service
- Star topology: only one cable to connect
- Auto power supply: 8 to 28 VDC with fast warm-up time

### OUTLINE DIMENSIONS in millimeters



#### Cable Specifications

Cable length: 15m

#### Standard Half Duplex:

V In Pos	Red
V In Neg	Black
TX	Green
RX	White

#### Optional Full Duplex:

V In Pos	Red
V In Neg	Black
TX	Green
TX n	White
RX	Brown
RX n	Blue

Braided shield

Shield is a bare twisted braid

## Digital Compression Load Cell

SPECIFICATIONS							
PARAMETER		VALUE					UNIT
VPG Accuracy class		CC	G5	G3	G2	H3	J4
Minimum utilization		NA	50	30	20	33	30
OIML Accuracy class		NA	C3	C3MR10	C3M15	C4MR12	C6MR20
Maximum no. of intervals (n)		NA	3000	3000	3000	4000	6000
Rated capacity—R.C. (E <sub>max</sub> )		20*, 30, 35, 40, 50					T
Rated output—R.O.		200,000					Counts
Rated output tolerance	Standard	160					±Counts
	Optional	25					
Zero balance		1600					±Counts
Creep (30 min.)		0.100	0.025	0.025	0.015	0.018	0.013
Zero return (30 min.)		0.100	0.017	0.017	0.017	0.0125	0.0083
Total Error		0.100	0.020	0.020	0.020	0.015	0.010
Temperature effect on output		0.003	0.0012	0.0012	0.0012	0.00075	0.00058
Temperature effect on zero		0.0040	0.0023	0.0014	0.0009	0.0012	0.0007
Y = E <sub>max</sub> /V <sub>min</sub>		NA	6000	10000	15000	12000	20000
Temp. range, compensated		-10 to +40					°C
Temp. range, safe		-40 to +70					°C
Temp. range, storage		-50 to +90					°C
Maximum safe static overload		150					% of R.C.
Ultimate static overload		300					% of R.C.
Supply, recommended		12					VDC
Supply, range		8 ÷ 28					VDC
Current, max.		50					mA
Resolution		20					Bit (at 1 Hz)
Signal update per second		1   10   20   40   67   100   200					Samples/s
Baud rate		1200 ÷ 115200					bits/s
Transmission type		Serial asynchronous data transmission					
Protocol type		Non-standard ASCII multi-drop					
Number of network address		32					
Data error detection		Odd/even parity, checksum					
Encryption		None/custom					
Data transmission interface	Standard	RS485/RS422 (2-wire, half-duplex)					
	Optional	RS485/RS422 (4-wire, full-duplex)					
Termination	Standard	None					Ω
	Optional	120Ω, 5%, 200 ppm/°C					
Surge protection	Standard	Industrial					
	Optional	Harsh					
Insulation resistance		>2000					MΩ
Cable length	Standard	15 (49)					m (ft)
	Maximum	100 (328)					
Max. transmission cable length		1200					m
Cable type	Standard	Braided shield, 2 twisted pairs—24 AWG, polyurethane jacket					
	Optional	Braided shield, 3 twisted pairs—24 AWG, polyurethane jacket					
Construction		Stainless steel, welded seal					
Environmental protection		IP66/IP68—5 bar					
Outline dimensions DWG.		<b>294.000.00-3</b>					

\*20T Capacity is not OIML approved

All specifications subject to change without notice.